

LineUP Flow EZ™

Flow controller for pressure based fluid control



INTRODUCTION

The **Flow EZ™** is the most advanced system available for **pressure based flow control**. The compact device stands alone near the microfluidic setup, allowing the user to **minimize bench space use** without the need of a PC. Be operational and **generate data rapidly**.



Easy to use



Control with or without a PC



Modular & Adaptable



Intuitive software
including SDK for
customized applications



Compact

PRESSURE RANGES

Part number	Pressure range	Required pressure supply
LU-FEZ-0025	0 to 25 mbar (0 to 0,36 psi)	150 mbar (0,22 psi)
LU-FEZ-0069	0 to 69 mbar (0 to 1,0 psi)	
LU-FEZ-0345	0 to 345 mbar (0 to 5,00 psi)	1100 mbar (15,95 psi)
LU-FEZ-1000	0 to 1000 mbar (0 to 14,50 psi)	
LU-FEZ-2000	0 to 2000 mbar (0 to 29,01 psi)	2100 mbar (30,46 psi)
LU-FEZ-7000	0 to 7000 mbar (0 to 101,5 psi)	7100 mbar (103,0 psi)
LU-FEZ-N025 *	0 to -25 mbar (0 to -0,36 psi)	-800 mbar (-11,6 psi)
LU-FEZ-N069 *	0 to -69 mbar (0 to -1,0 psi)	
LU-FEZ-N345 *	0 to -345 mbar (0 to -5,00 psi)	
LU-FEZ-N800 *	0 to -800 mbar (0 to -11,6 psi)	

* For negative version of the Flow EZ™, Prevent any liquid from entering the device. A backflow filter or liquid trap reservoir can be used to avoid liquid flowing into pneumatic tubing.



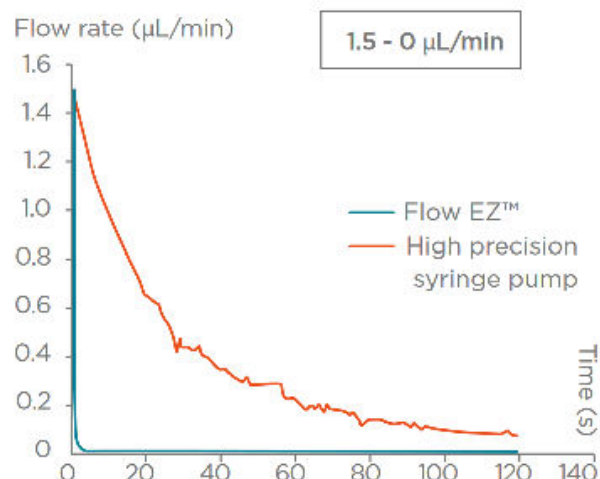
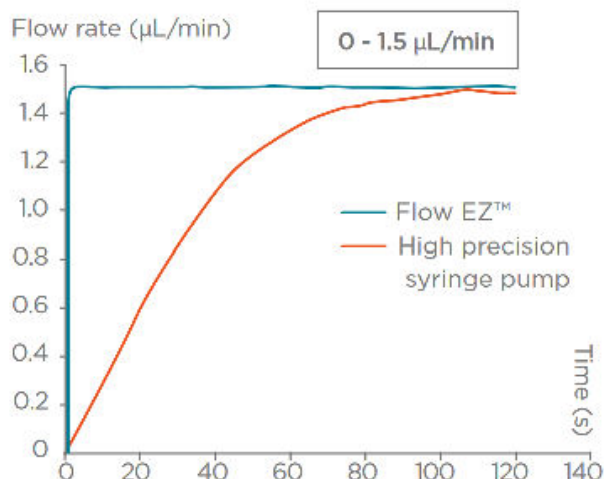
SPECIFICATIONS

Performance	
Step	0,03% FS (at full scale)
Precision	0,1% on the measured value (effective beyond 10% of the maximum pressure)
Hardware specifications	
Dimensions L*W*H	91,9 * 71,8 * 131 mm
Weight	634 g
Electronical specifications	
Power consumption	6 W
Chemical compatibility	
Gas compatibility	Dry, oil-free gas, air (N ₂ , O ₂ , CO ₂), any non corrosive or non explosive gas
Liquid compatibility	Aqueous solvent, oil, organic solvent, biological sample
Software compatibility	
Fluigent software	OxyGEN
	Software Development Kit (SDK)
Firmware compatibility	Link module: v3.51
	Flow EZ™ module: v5.51 or v3.61*

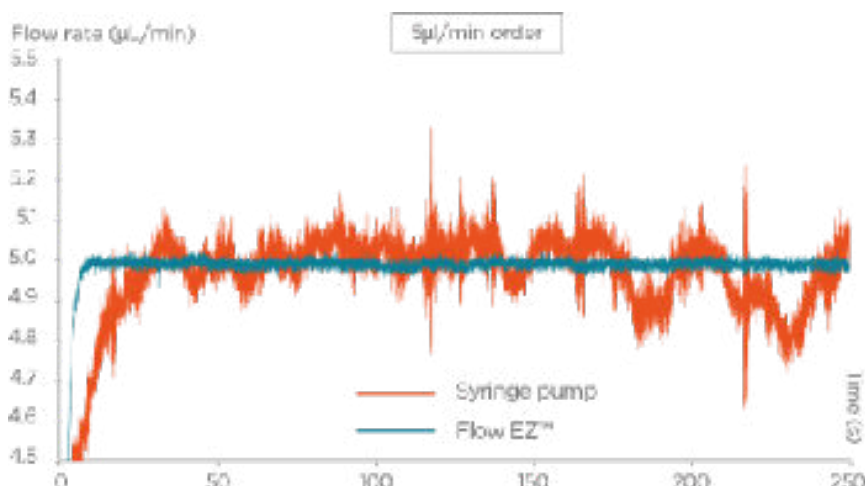
*If you have older version and facing some issues please contact us at support@fluigent.com to for an update of your Link or Flow EZ™ module.

Features	FLUIGENT Flow EZ™	Other Pressure-Based Solutions	Syringe Pumps
Free standing (no PC needed)	✓	✗	~
Modular & expandable	✓	✗	~
Short response time	✓	~	✗
Pulseless flow	✓	✓	✗
Control & monitor display	✓	~	~
Very low gas consumption	✓	✗	NA
Compact	✓	~	✗

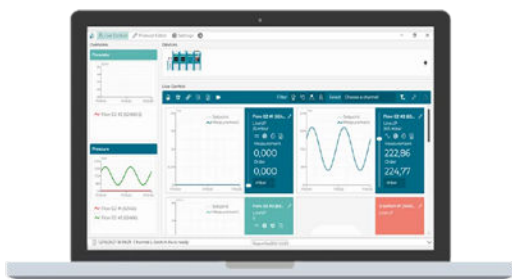
RESPONSE TIME



PRESSURE STABILITY



SOFTWARE COMPATIBILITY



The **LineUP series** modules are compatible with **Fluigent's** newest software applications:

- **OxyGEN**: Complete interface to easily control, monitor, record data and automate time based protocols for all Fluigent instruments.
- **Software Development Kit**: Integrate Flow EZ™ seamlessly in existing applications. Available in C++, Labview, Matlab, Python, etc.

OxyGEN

