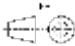

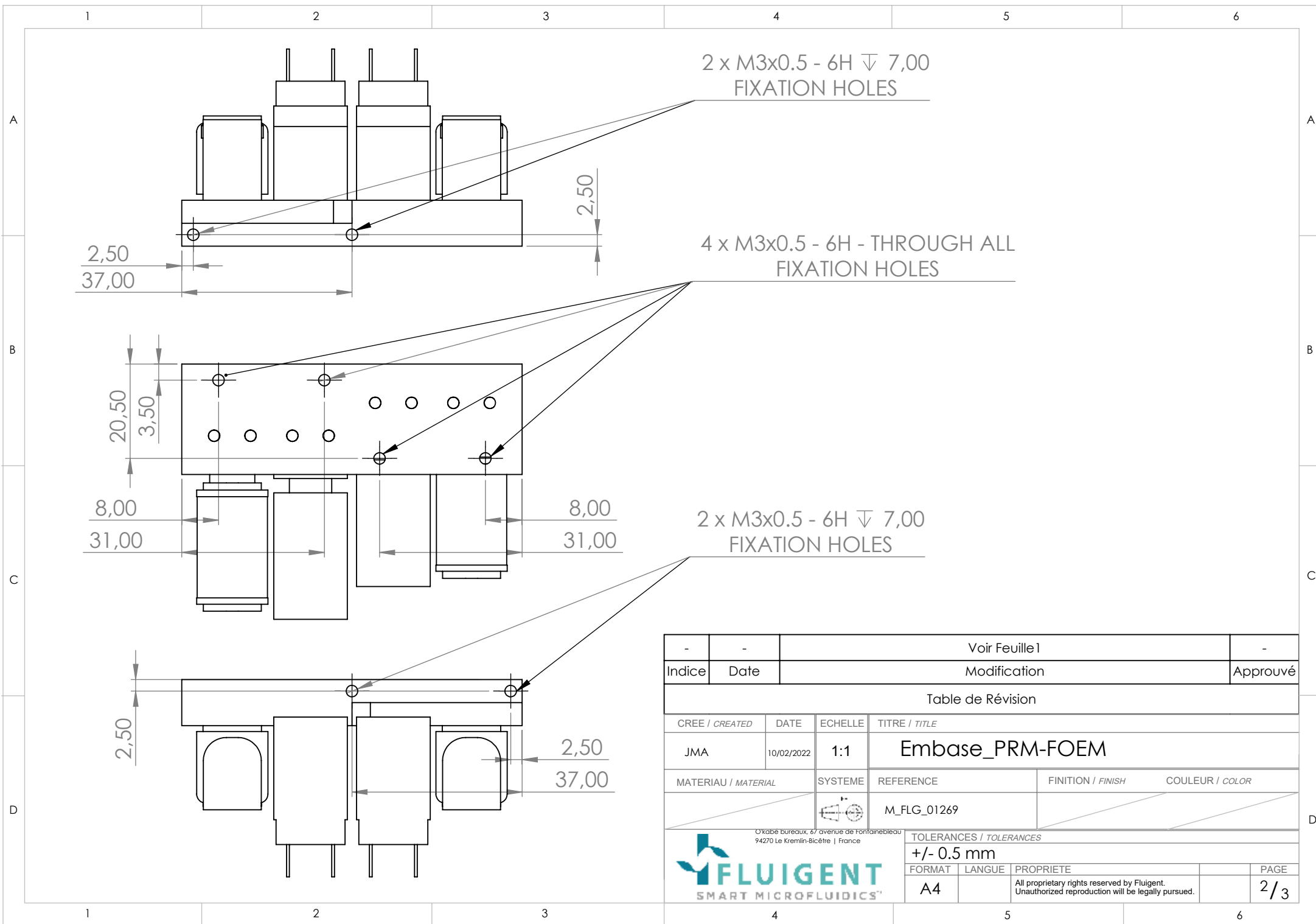
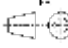



A	10/02/2022	DEFINITION			LLE
Indice	Date	Modification			Approuvé
Table de Révision					
CREE / CREATED	DATE	ECHELLE	TITRE / TITLE		
JMA	10/02/2022	1:1	Embase_PRM-FOEM		
MATERIAU / MATERIAL		SYSTEME	REFERENCE	FINITION / FINISH	COULEUR / COLOR
			M_FLG_01269		
 FLUIGENT SMART MICROFLUIDICS®			TOLERANCES / TOLERANCES		
			+/- 0.5 mm		
			FORMAT	LANGUE	PROPRIETE
			A4	All proprietary rights reserved by Fluigent. Unauthorized reproduction will be legally pursued.	1 / 3



-	-	Voir Feuille1			-
Indice	Date	Modification			Approuvé
Table de Révision					
CREE / CREATED	DATE	ECHELLE	TITRE / TITLE		
JMA	10/02/2022	1:1	Embase_PRM-FOEM		
MATERIAU / MATERIAL		SYSTEME	REFERENCE	FINITION / FINISH	COULEUR / COLOR
			M_FLG_01269		
 <div>Otate bureaux, 6/ avenue de Fontainebleau 94270 Le Kremlin-Bicêtre France</div>			TOLERANCES / TOLERANCES		
			+/- 0.5 mm		
FORMAT		LANGUE	PROPRIETE		PAGE
A4			All proprietary rights reserved by Fluigent. Unauthorized reproduction will be legally pursued.		2/3

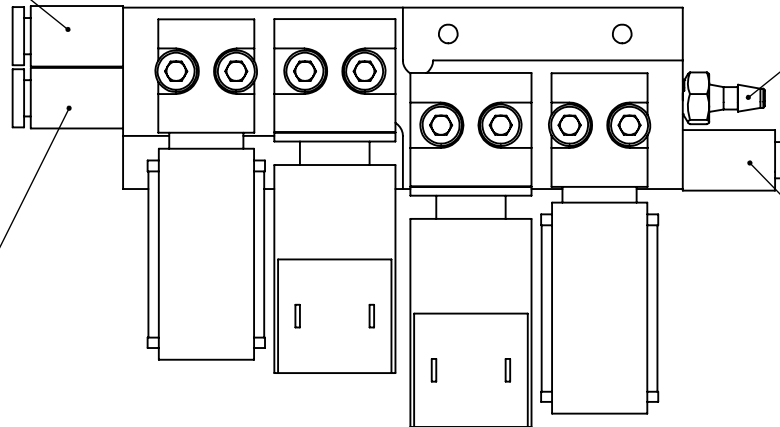
PRESSURE CONNECTORS

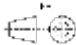

- Push-Pull configuration:
Push-in connector
M5 thread - 4mm OD tubing
- FlowEZ configuration:
empty

Barb connector
M5 thread - 3/32" ID tubing

Push-in connector
M5 thread - 4mm OD tubing

Push-in connector
M5 thread - 4mm OD tubing



-	-	Voir Feuille 1			-		
Indice	Date	Modification			Approuvé		
Table de Révision							
CREE / CREATED	DATE	ECHELLE	TITRE / TITLE				
JMA	10/02/2022	1:1	Embase_PRM-FOEM				
MATERIAU / MATERIAL		SYSTEME	REFERENCE	FINITION / FINISH	COULEUR / COLOR		
		M_FLG_01269					
 <p>Oxade bureaux, 47 avenue de Fontainebleau 94270 Le Kremlin-Bicêtre France</p>			TOLERANCES / TOLERANCES				
			+/- 0.5 mm				
			FORMAT	LANGUE	PROPRIETE		PAGE
			A4		All proprietary rights reserved by Fluigent. Unauthorized reproduction will be legally pursued.		3/3