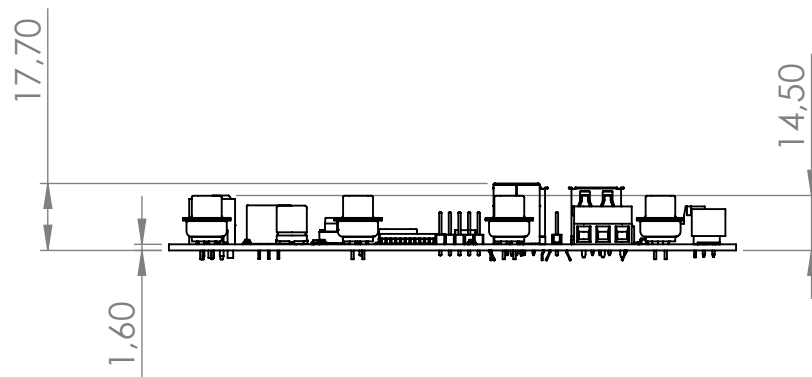
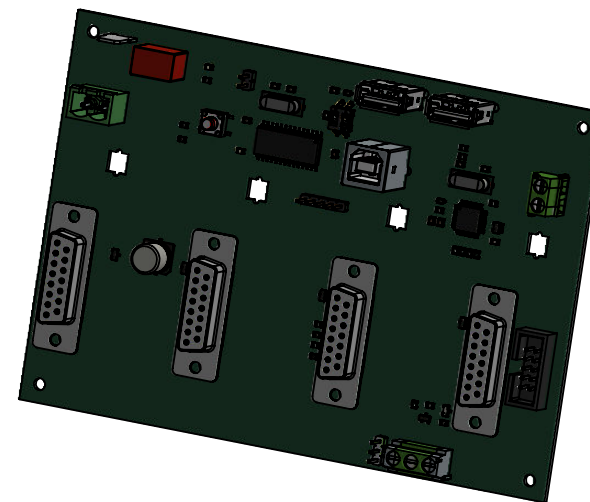
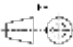



4 x \varnothing 3,20
FIXATION HOLES



The electronic board should be elevated by at least **5 mm**, to keep the welding area free.

A	10/02/2022	CREATION			LLE
Indice	Date	Modification			Approuvé
Table de Révision					
CREE / CREATED	DATE	ECHELLE	TITRE / TITLE		
JMA	10/02/2022	1:2	0222_FOEM-Motherboard		
MATERIAU / MATERIAL		SYSTEME	REFERENCE	FINITION / FINISH	COULEUR / COLOR
			E_FLG_01527		
<div><div>Oxade bureaux, 67 avenue de Fontainebleau 94270 Le Kremlin-Bicêtre France</div></div>			TOLERANCES / TOLERANCES		
			+/- 0.5 mm		
FORMAT		LANGUE	PROPRIETE		PAGE
A4			All proprietary rights reserved by Fluigent. Unauthorized reproduction will be legally pursued.		1 / 1