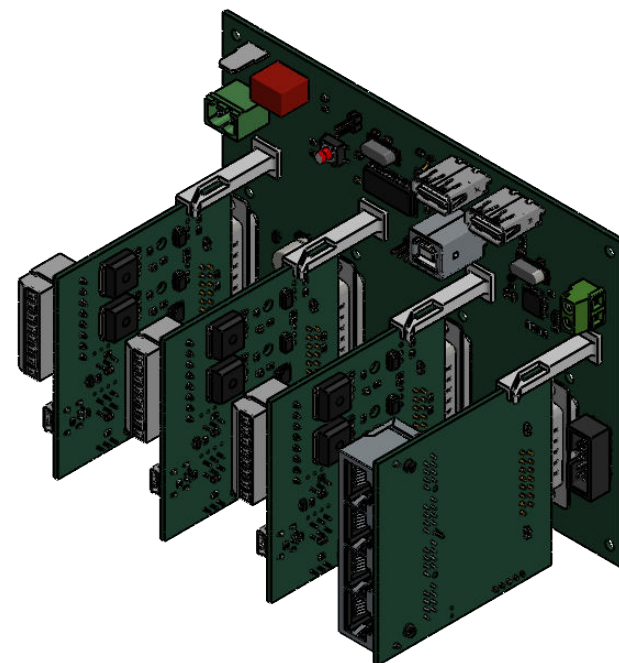
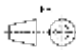



The electronic board should be elevated by at least **5 mm**, to keep the welding area free.



A	10/02/2022	DEFINITION		LLE										
Indice	Date	Modification		Approuvé										
Table de Révision														
CREE / CREATED	DATE	ECHELLE	TITRE / TITLE											
JMA	10/02/2022	1:2	0222_ASM_FOEM											
MATERIAU / MATERIAL		SYSTEME	REFERENCE	FINITION / FINISH COULEUR / COLOR										
		E_FLG_01529												
<div><div><div><p>Océane Bureaux, 67 avenue de Fontainebleau 94270 Le Kremlin-Bicêtre France</p></div></div><div><div>TOLERANCES / TOLERANCES</div><table><tr><td>FORMAT</td><td>LANGUE</td><td>PROPRIETE</td><td></td><td>PAGE</td></tr><tr><td>A4</td><td></td><td>All proprietary rights reserved by Fluigent. Unauthorized reproduction will be legally pursued.</td><td></td><td>1 / 1</td></tr></table></div></div>					FORMAT	LANGUE	PROPRIETE		PAGE	A4		All proprietary rights reserved by Fluigent. Unauthorized reproduction will be legally pursued.		1 / 1
FORMAT	LANGUE	PROPRIETE		PAGE										
A4		All proprietary rights reserved by Fluigent. Unauthorized reproduction will be legally pursued.		1 / 1										